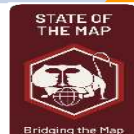


COLLABORATIVE CARTOGRAPHY OF CYCLING INFRASTRUCTURE FOR ROUTE OPTIMIZATION AND THEMATIC MAPS IN MEDELLIN, COLOMBIA.



CONTEXT

According to the World Health Organization's (WHO's) 2018 Ambient Air Quality Database, Medellín is ranked #9 out of the most polluted cities and towns in Latin America based on PM2.5 pollutants.



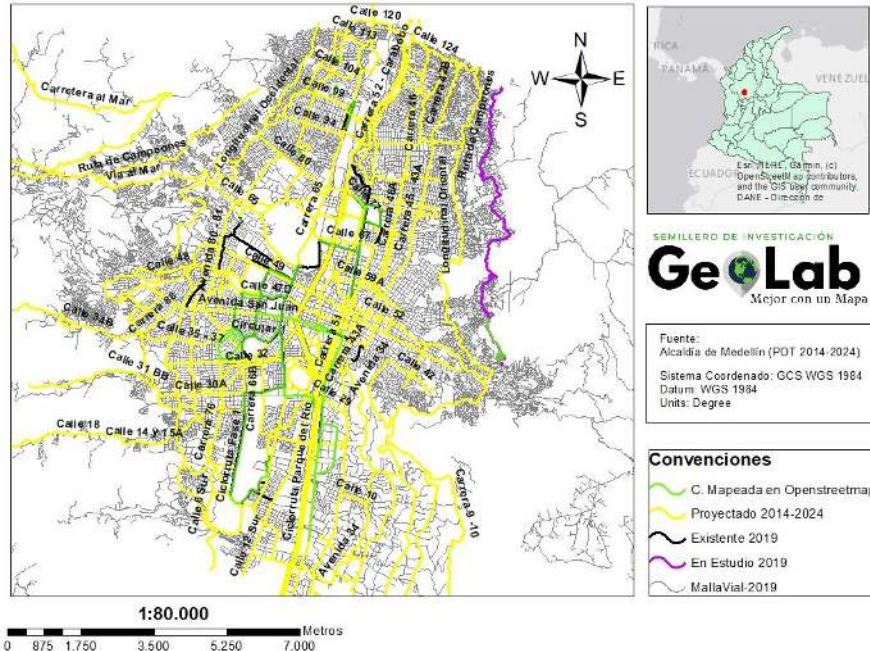
CONTEXT

The project is a cooperation between GeoLab (Universidad de Antioquia), and SiCLas (group of cyclists), both present in Medellin (Colombia), proposes a collaborative mapping by bicycle users as an urban transport mode.



STUDY AREA

CYCLE ROUTES PRESENTS IN MEDELLIN TOWN



GOALS

Mapping existing cycling infrastructure and alternate cycling routes using the bicycle as a mode of urban transport in Medellin for the optimization of routes and thematic maps with geospatial tools and open data.



APPROACH

1

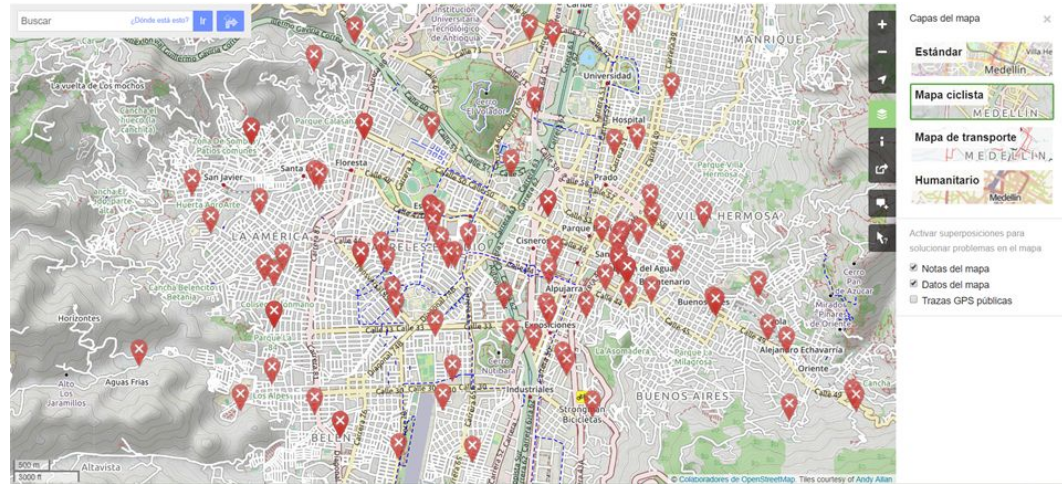
Information
collection

2

Gathering
of data in
field

3

Data analysis and
visualization of
thematic maps



Editar elemento ✕

Ciclovía ⋮

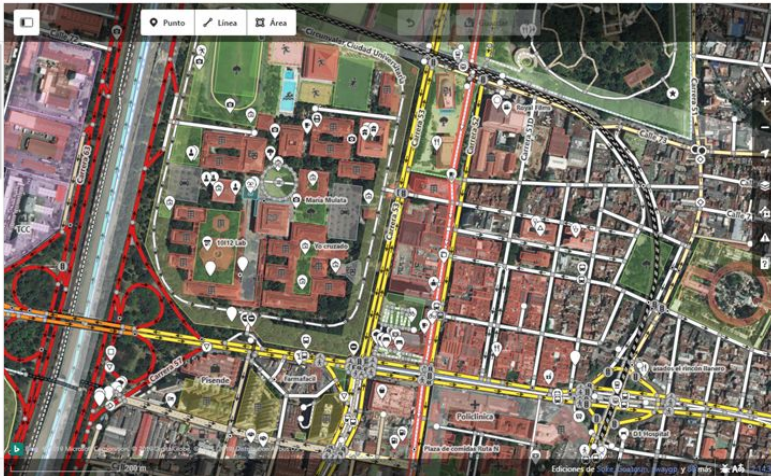
[Acerca de esto](#)

Problemas (8)

- Ciclovía cruza Edificio
 Use un puente o túnel
 Reposicionar los elementos
- Ciclovía cruza Edificio de Extensión UdeA
- Ciclovía cruza Ruta N
- Ciclovía cruza Calle 65
- Ciclovía cruza Calle 65
- Ciclovía cruza Via de servicio
- Ciclovía cruza Calle 64
- Ciclovía cruza Calle 62

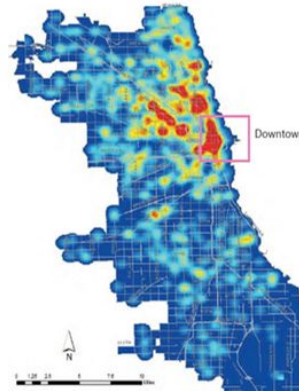
Todos los campos



Nombre



EXPECTED RESULTS

- **Analysis of information collected to characterize urban cyclists and identify preferred routes, insecure areas, among others.**



- 
- **Platform that allows the spatial visualization of the possible routes of mobility for bike use.**
 - **Users will be able to report security attributes (theft, intimidation), infrastructure (damage of the cycle routes), environmental problems and mobility (more frequented areas, cycle rides).**
- 

THANK YOU!



semillerogeolab@udea.edu.co

