

MAPPING MOBILITY STOCKPORT

Sam Milsom | Open Data Manchester
@opendatamcr
@milsomsam

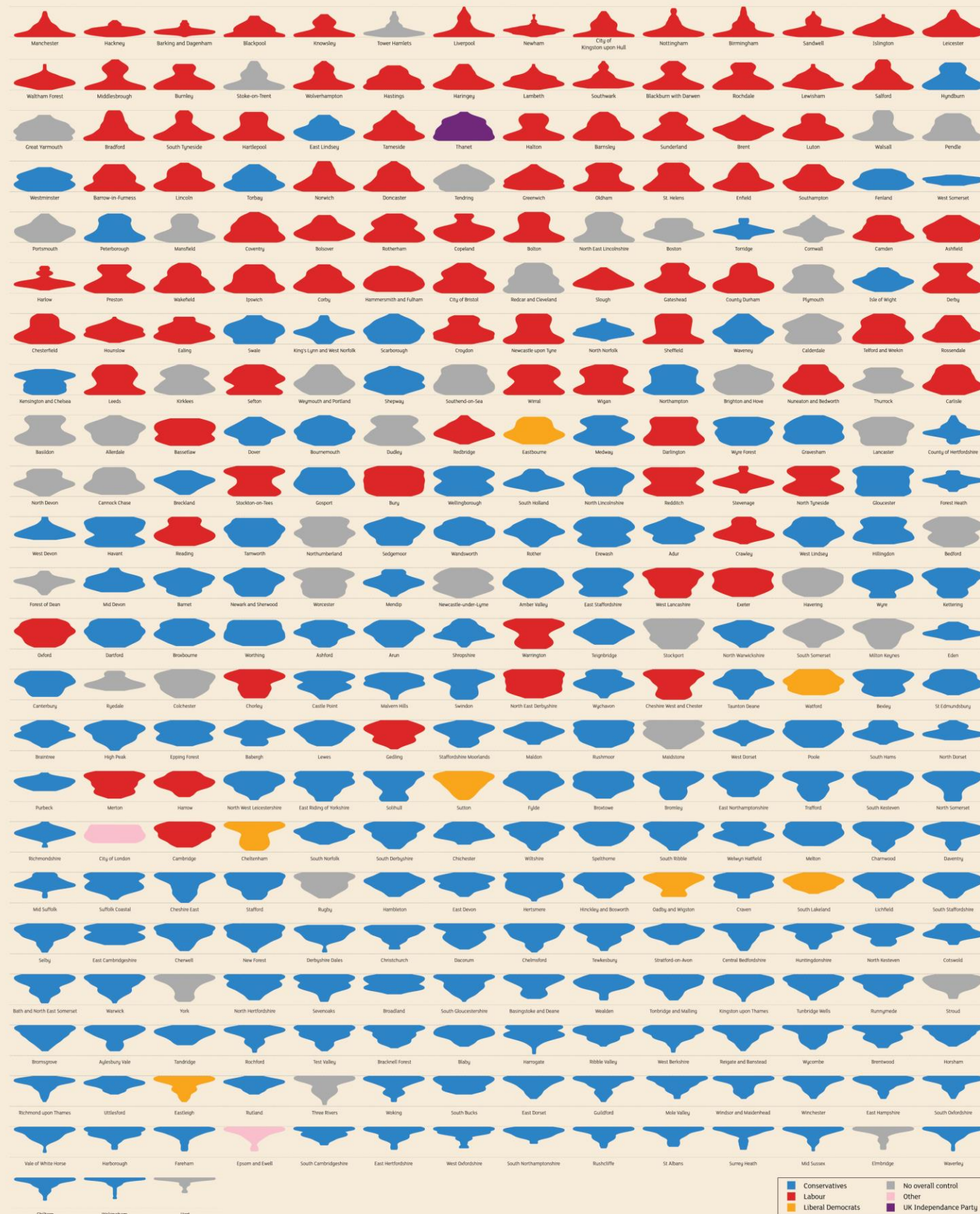


WHAT IS OPEN DATA MANCHESTER?

- Established in 2010 we are an independent Community Interest Company (CIC)
- Advocate for appropriate local, national government data release
- Run workshops, training, events and research
- Highlight state of the art practice
- Develop initiatives looking at new ways of working with data
- Promote organisations doing good work with data both government, business and communities

WHAT IS OPEN DATA MANCHESTER?

DEPRIVATION vs POLITICAL CONTROL IN ENGLISH LOCAL AUTHORITIES



Local authorities are sorted according to the relative deprivation of the area using data from the Index of Multiple Deprivation 2015, with Manchester being the most deprived and Hart least. Shapes show the relative deprivation profile of each local authority area, with a wider bottom indicating more deprivation and a wider top less deprivation. Local authorities are divided into Lower Super Output Areas (LSOAs) with each area containing approximately 1,500 residents. There are 32,844 LSOAs across England each one ranked according to their level of relative deprivation. These rankings are sorted into 20 sets (vigintiles) each containing approximately 1,642 LSOAs. These are then matched with each local authority and the profile drawn from the amount of these vigintiles in each area. All profiles have been normalised so they are the same width. If we didn't do this it would be difficult to see the profile characteristics of local authorities with smaller populations. Deprivation is measured across income, employment, education skills and training, health deprivation and disability, crime, barriers to housing and services and living environment domains.

Visualisation created in R Studio by Jamie Whyte - @northernjamie - with layout by Julian Tait - @juliantait - using Adobe Illustrator. Data sources used: English Index of Multiple Deprivation 2015 released by the Ministry of Housing, Communities and Local Government - <http://opendatacommunities.org> and; political control data from the Local Government Information Unit - <https://www.lgiu.org.uk/local-government-facts-and-figures/>



We also work with

- Data standards
- Data governance
 - Data rights and representation (Data cooperatives as personal data stores)
 - Declaration for Responsible and Intelligent Data Practice
- Internet of Things
 - Building and supporting open infrastructure (Things North)
- Innovation projects
 - Pollution mapping



MAPPING MOBILITY STOCKPORT

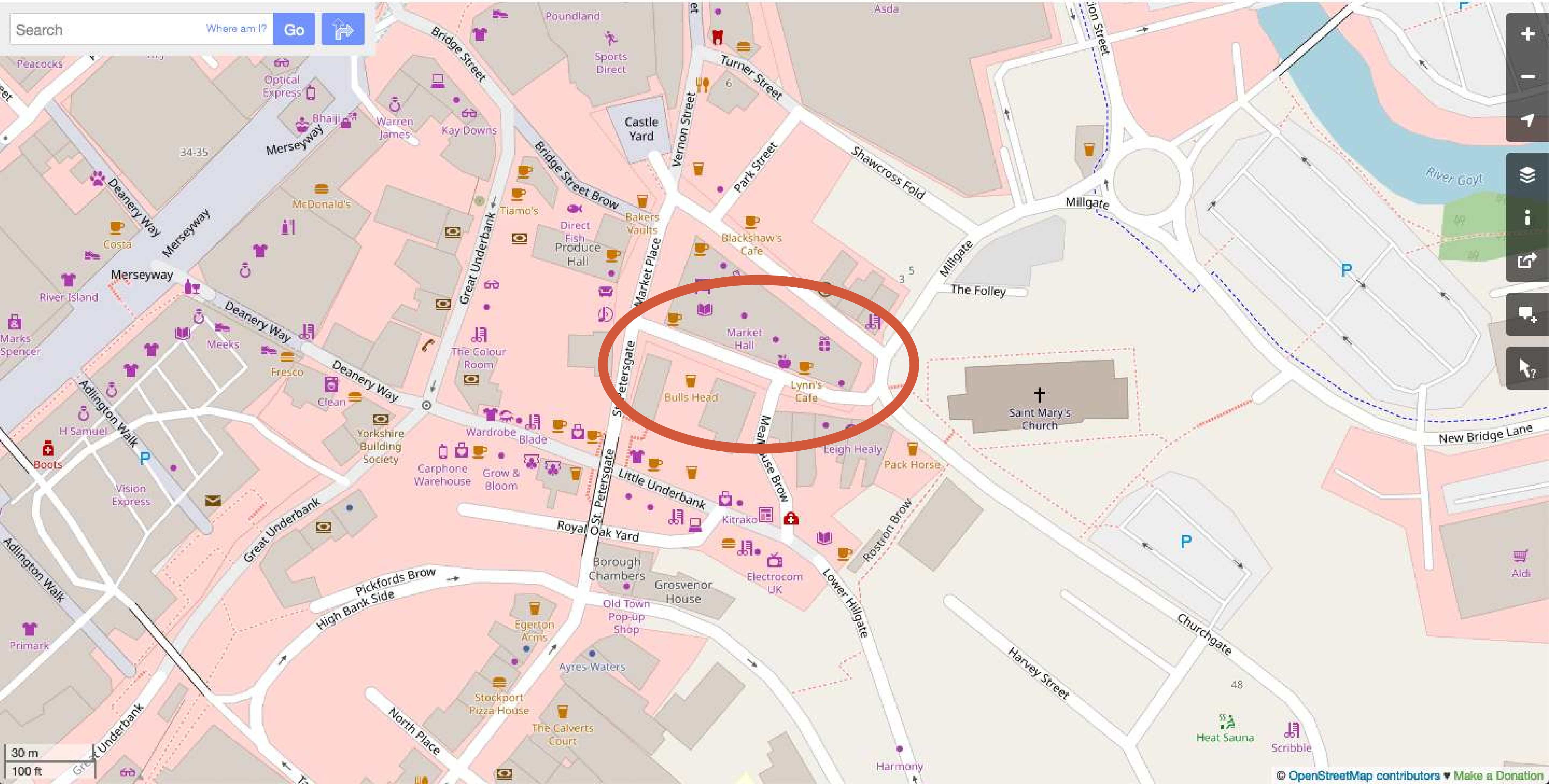






FOR SALE
DEVELOPMENT
OPPORTUNITY
CALL 011 9797

THROAT JACK
BARBER
SHOP
→
NOW
OPEN
0161 637 1330
WWW.CUTTHROATJACKS.COM

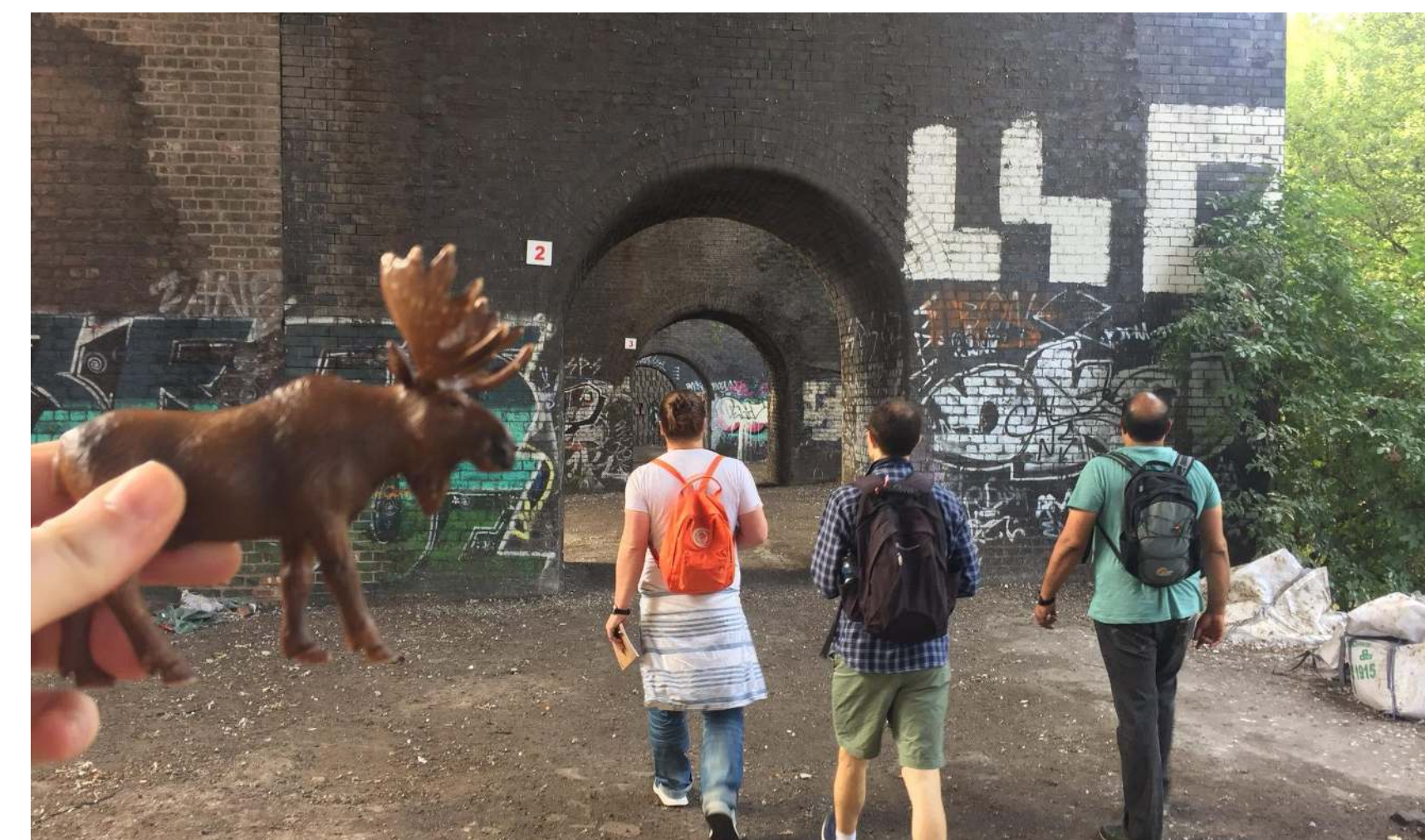






ISSUES

- Stockport town centre is not the most accessible...
- People with disabilities often on the front line...
- How can we make our maps more useful for those with disabilities?
- How can they share the routes and strategies they have for navigating the town centre?

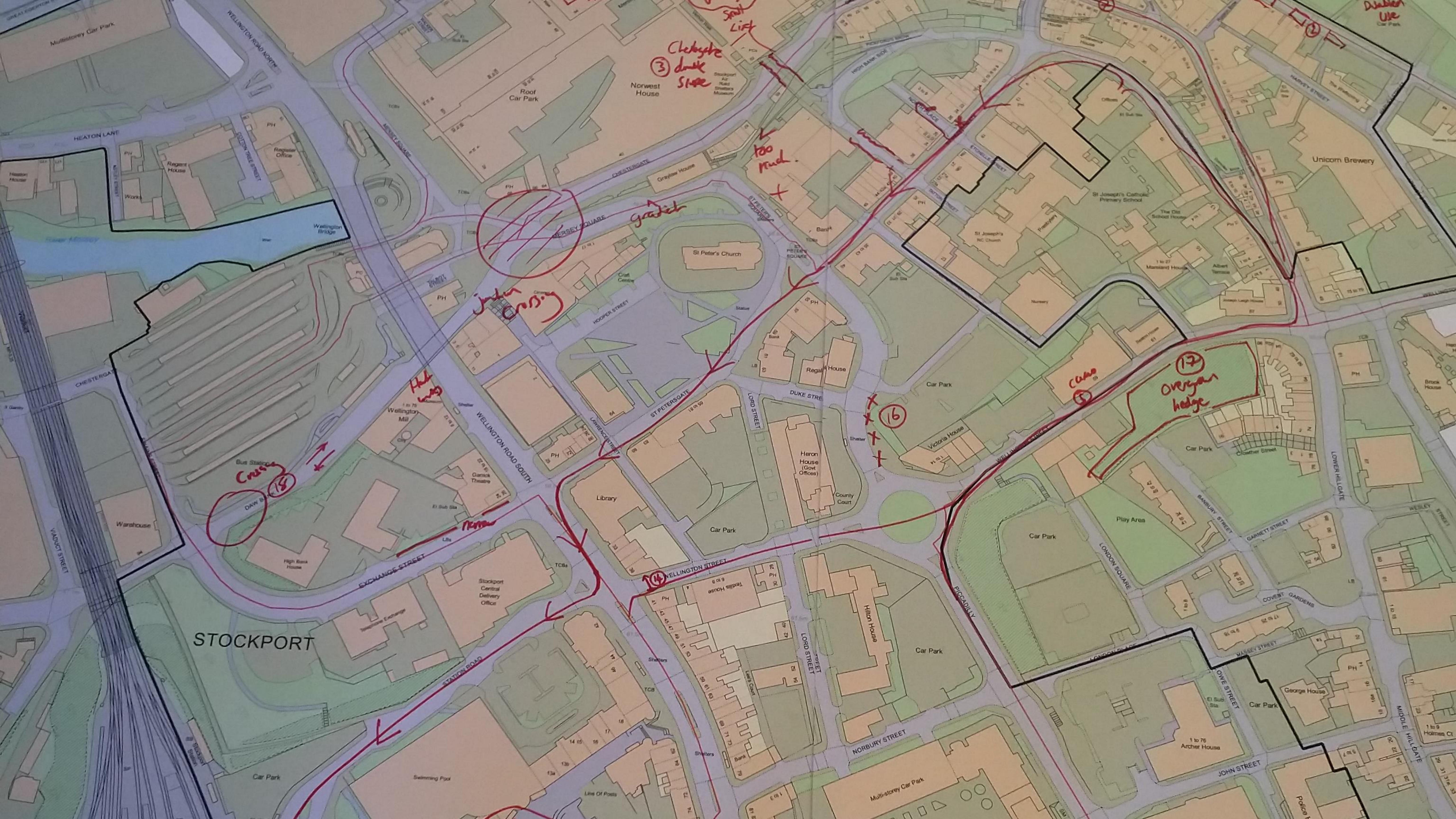


Joy Diversion!
Exploring, mapping & meandering in Manchester...



A REALLY SIMPLE METHOD

- Began by generating list of every day obstructions
- Used the map to start to identify 'problem areas'
- Started drawing routes and identifying more features
- Use photographs for clarification
- Used routes to plan expeditions or 'mapping party'



STOCKPORT

Chelbyke
3 Duke St

too mud

just crossing

Hill road

Cruddy
15

Narrow

overgrown
hedge

16

14

17

Dublin
Use





FINDINGS...













FixMyStreet

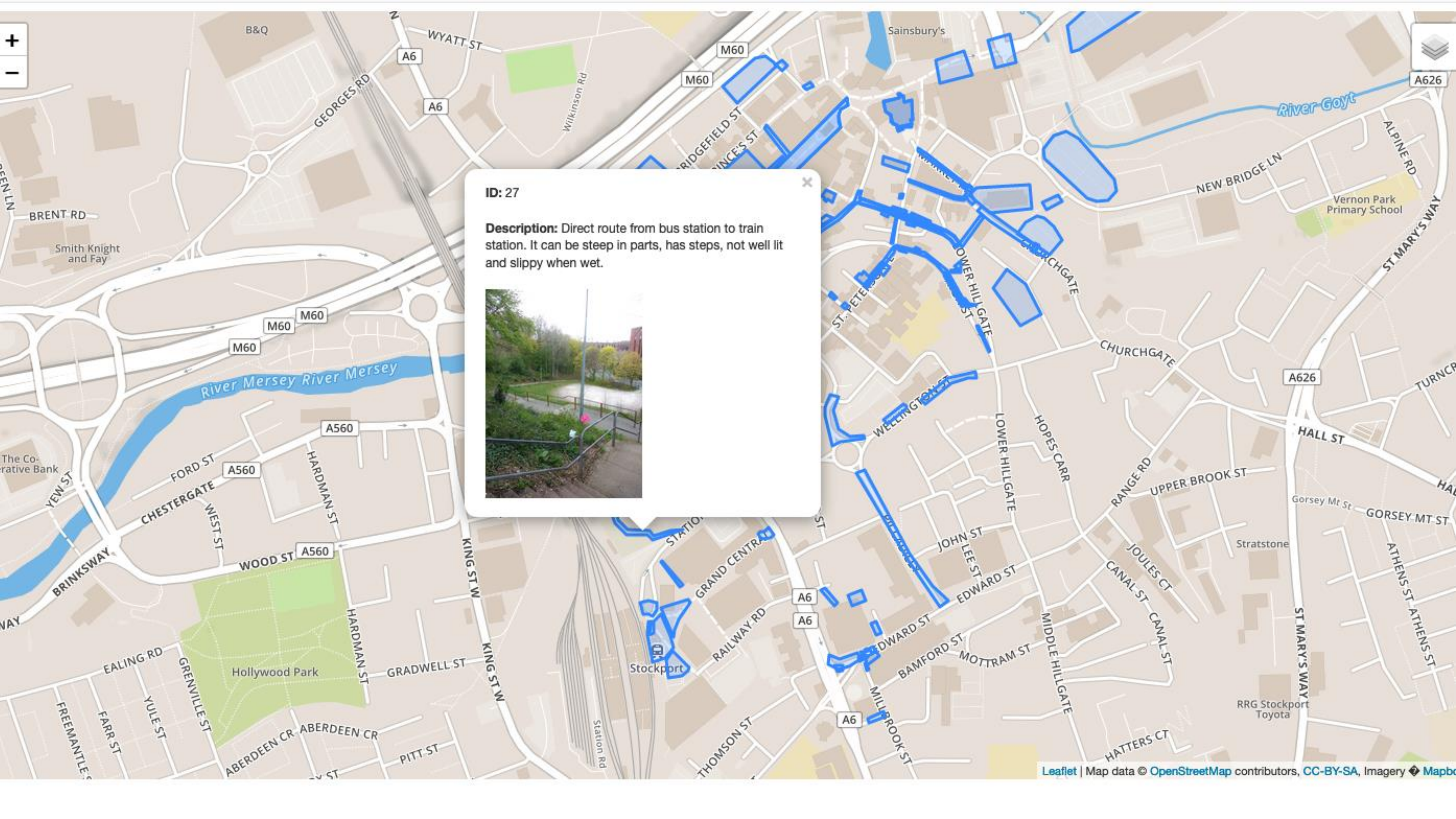












ID: 27

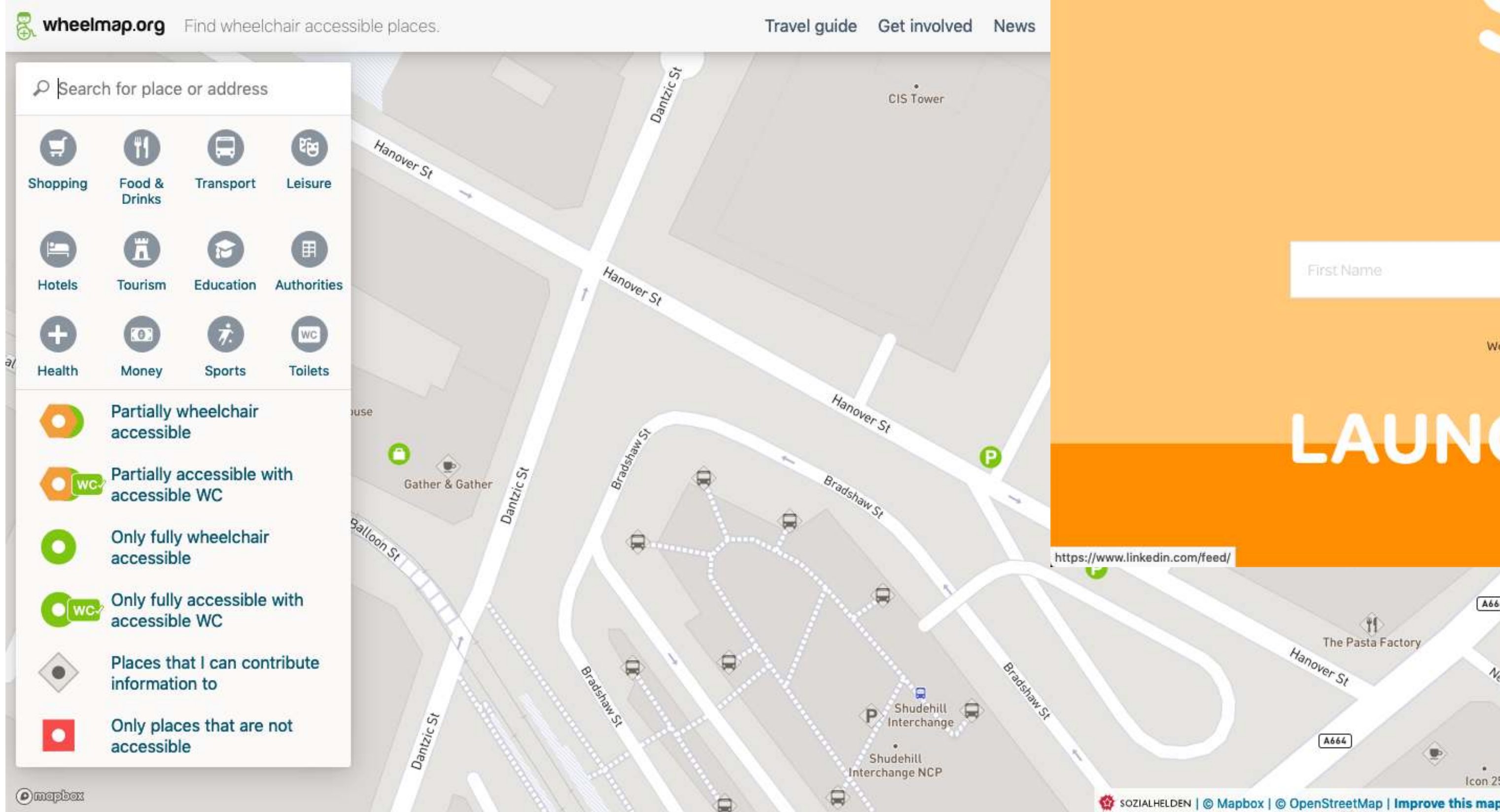
Description: Direct route from bus station to train station. It can be steep in parts, has steps, not well lit and slippery when wet.



Can we make our maps and routing apps more inclusive?

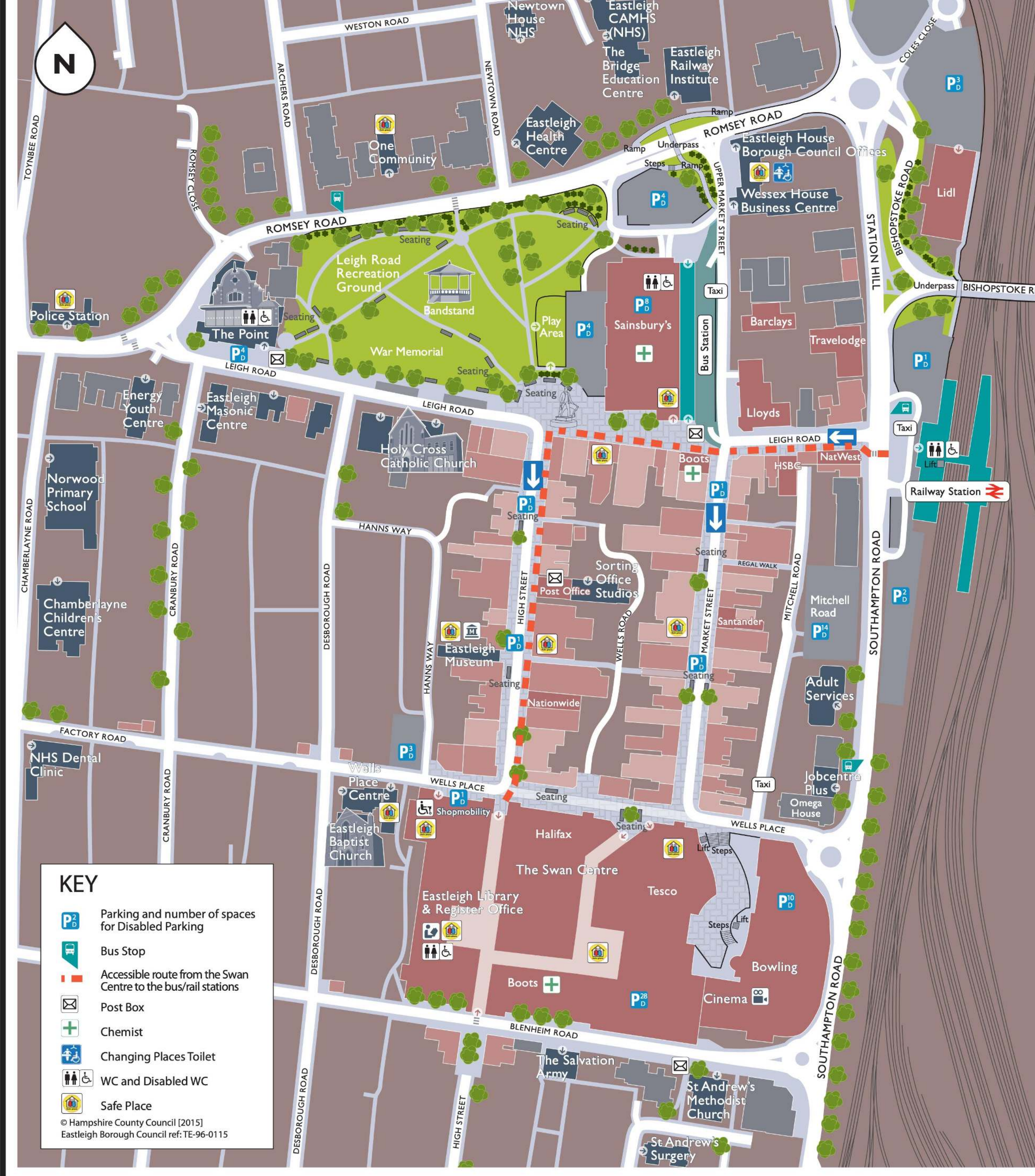
How?

Can we make our maps more inclusive?



“To most people the road is the same, whichever way you’re going.

For me, each side of the pavement is a completely different terrain to learn.”



KEY

P₂D

Parking and number of spaces for Disabled Parking

Bus Stop

Accessible route from the Swan Centre to the bus/rail stations

Post Box

Chemist

Changing Places Toilet

WC and Disabled WC

Safe Place

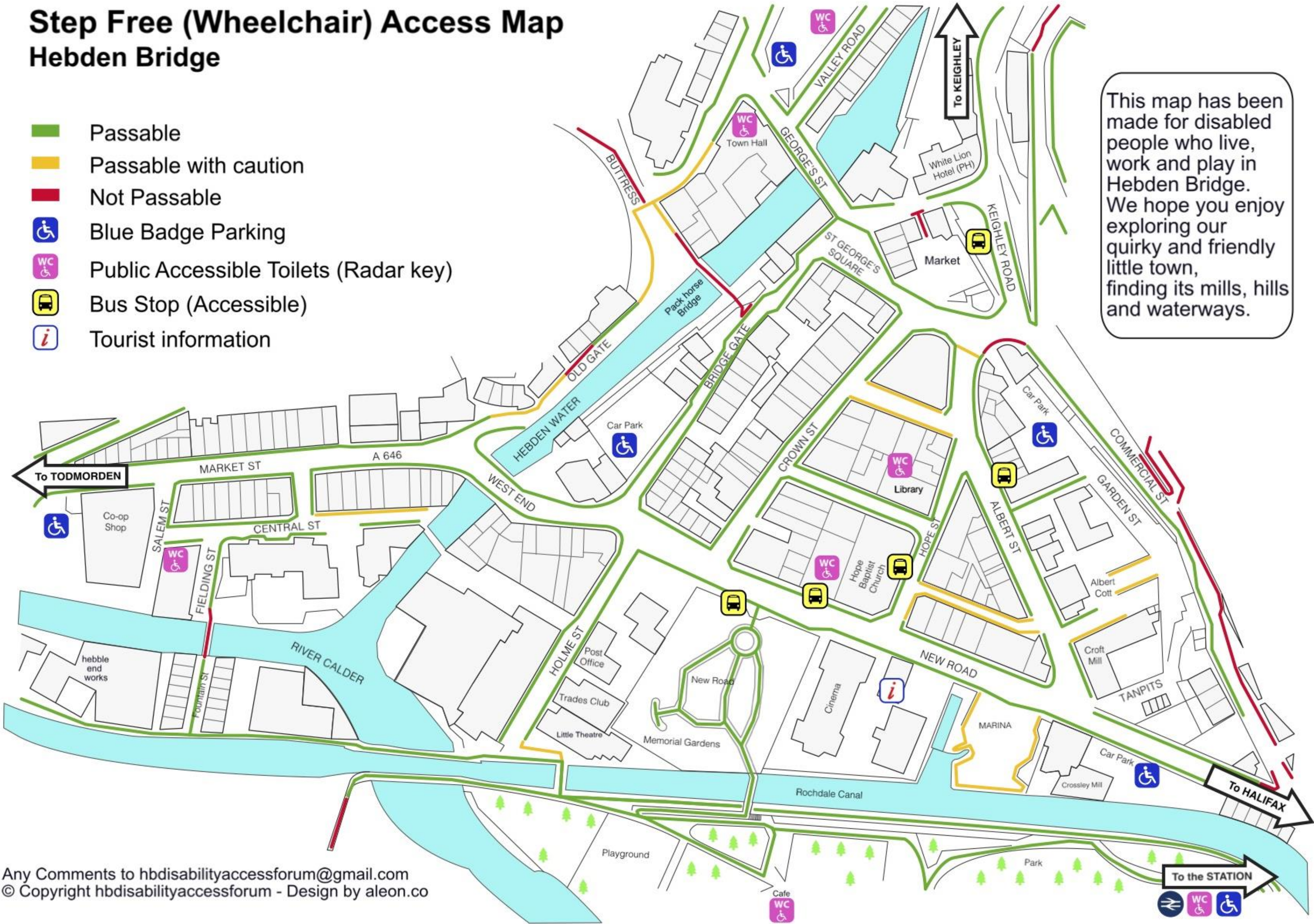
© Hampshire County Council [2015]
Eastleigh Borough Council ref: TE-96-0115

Step Free (Wheelchair) Access Map

Hebden Bridge

- Passable
- Passable with caution
- Not Passable
- Blue Badge Parking
- Public Accessible Toilets (Radar key)
- Bus Stop (Accessible)
- Tourist information

This map has been made for disabled people who live, work and play in Hebden Bridge. We hope you enjoy exploring our quirky and friendly little town, finding its mills, hills and waterways.



Comune di Castelfiorentino

Mappa dell'Accessibilità per il Turista

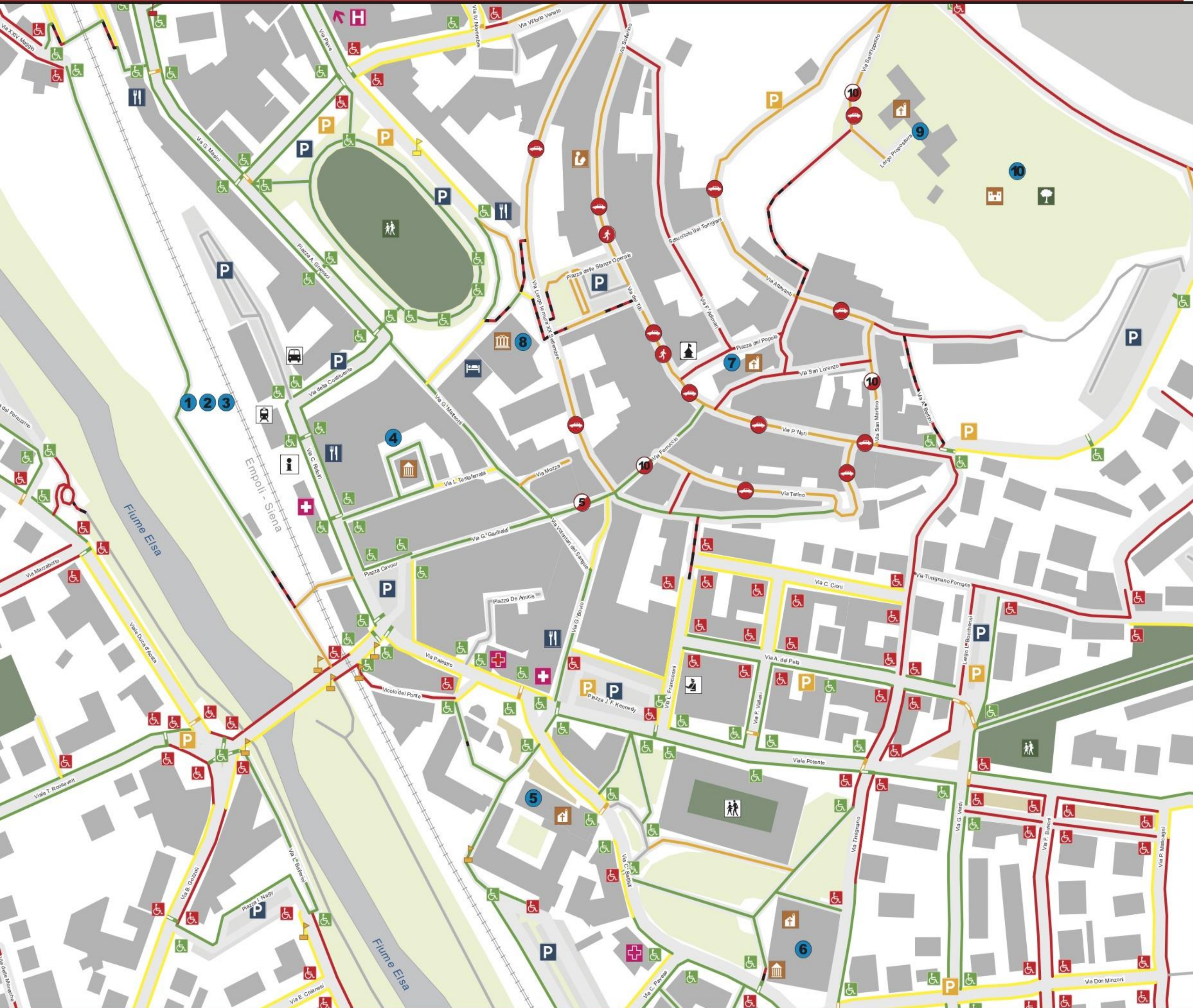
Accessibility Map for Tourists



Comune di Castelfiorentino



Autorità Regionale per la Partecipazione



Legenda

Legenda dei simboli relativi all'accessibilità

Elementi architettonici puntuali

Scivoli per disabili/Ramps

- Scivolo presente
Ramp existing
- Scivolo mancante
Ramp missing

Punti critici/Difficulties

- Difficoltà di movimento
Difficult point
- Difficoltà di passaggio
Critical passage
- Barriera
Barrier

Limitazioni/Limiting Factors

- Senza marciapiedi
No walkway
- Dissestato
Uneven
- Forte pendenza
Steep slope

Percorsi urbani

Percorsi/Paths Strisce/Crossings Scalinate/Steps

- Accesso libero per tutte le categorie di persone
Fully accessible
- Difficile accesso per persone su sedia a rotelle
Low accessibility for wheelchairs
- Difficile accesso per persone a mobilità ridotta
Low accessibility for people with reduced mobility
- Difficile accesso per tutte le persone
Difficult access for everybody
- Accessibilità non valutata
Accessibility index not evaluated

Legenda dei simboli cartografici

Punti di interesse

Servizi

- Stazione Ferroviaria
Train Station
- Stazione Autobus
Bus Station
- Parccheggio
Parking
- Riservato disabili
Restricted
- Pubblica Sicurezza
Police
- Ufficio Informazioni
Information Office
- Scuola
School
- Municipio
City Hall

Cultura e Arte

- Biblioteca
Library
- Chiesa
Church
- Mura
Wall
- Museo
Museum
- Teatro
Theatre

Sanità/Health

- Distretto sanitario
Offices
- Farmacia
Pharmacy
- Ospedale
Hospital
- Punto Primo Soccorso
Emergencies

Aree Verdi

- Area Giochi
Playground
- Parco urbano
Green Area

Ricettività/Accommodation

- Alberghi
Hotels
- Ristoranti
Restaurants

Rete idrica e ferroviaria

- Idrografia
River/Stream
- Ferrovia
Railway

Aree urbane

- Parccheggio
Parking lot
- Edifici
Building
- Verde Pubblico
Green Area
- Corpi d'acqua
Water Bodies

Sistema di riferimento geografico:
Mercatore Sferico
Unità di misura: Metri
Riferimento temporale: 30-06-2010
Dati stradali (c) OpenStreetMap
(and) contributors, CC-BY-SA

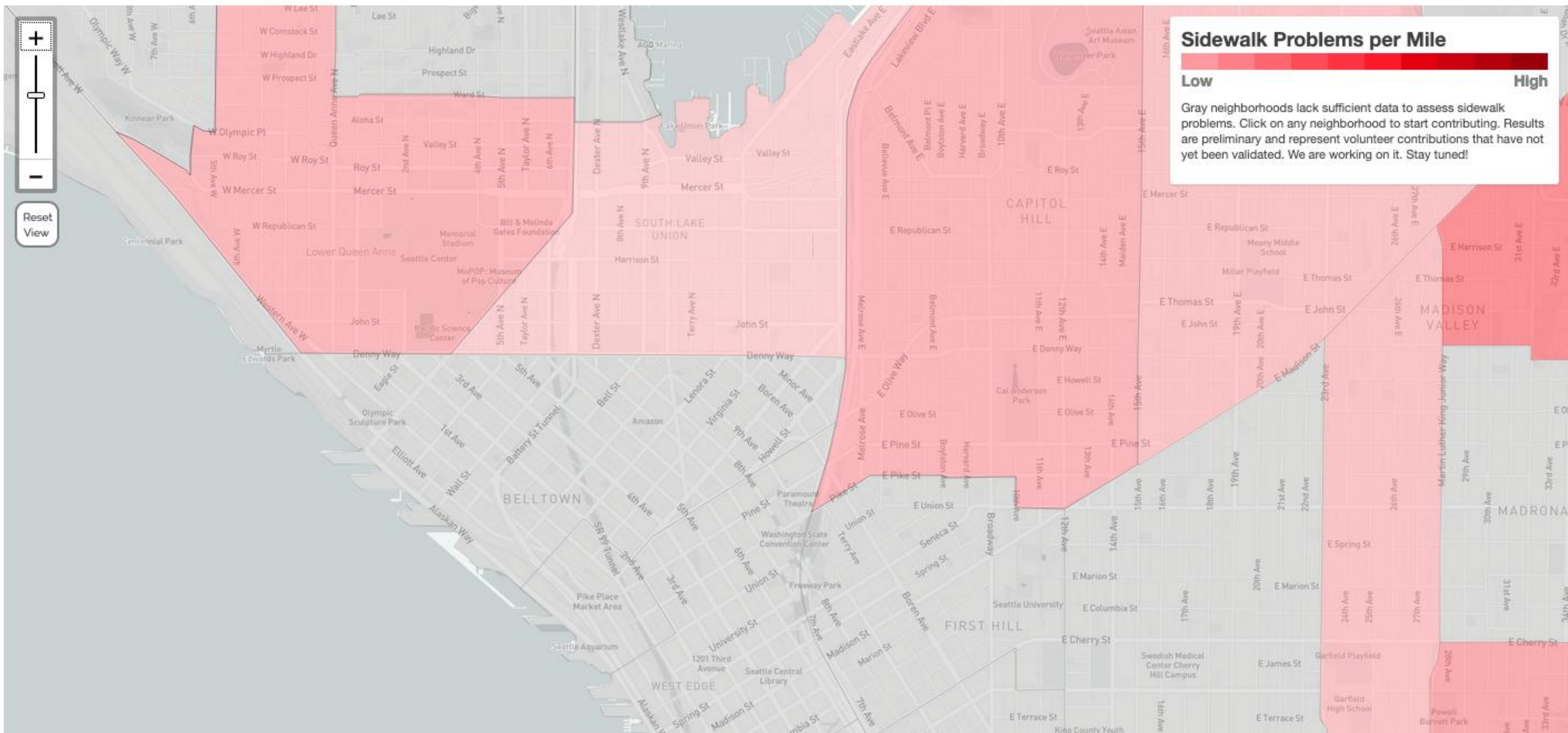
Questa mappa rappresenta una elaborazione della mappa dell'accessibilità realizzata durante il processo partecipativo "Libero accesso...Accesso libera tutti!", in particolare è una revisione critica mirata a guidare il turista che si trovi a visitare Castelfiorentino, fornendo tutte le indicazioni utili per poter scegliere il miglior percorso sulla base delle necessità e dei gusti personali. Assieme alla mappa dell'accessibilità sono rappresentati i punti di interesse e le attrazioni turistiche che renderanno possibile pianificare una visita.

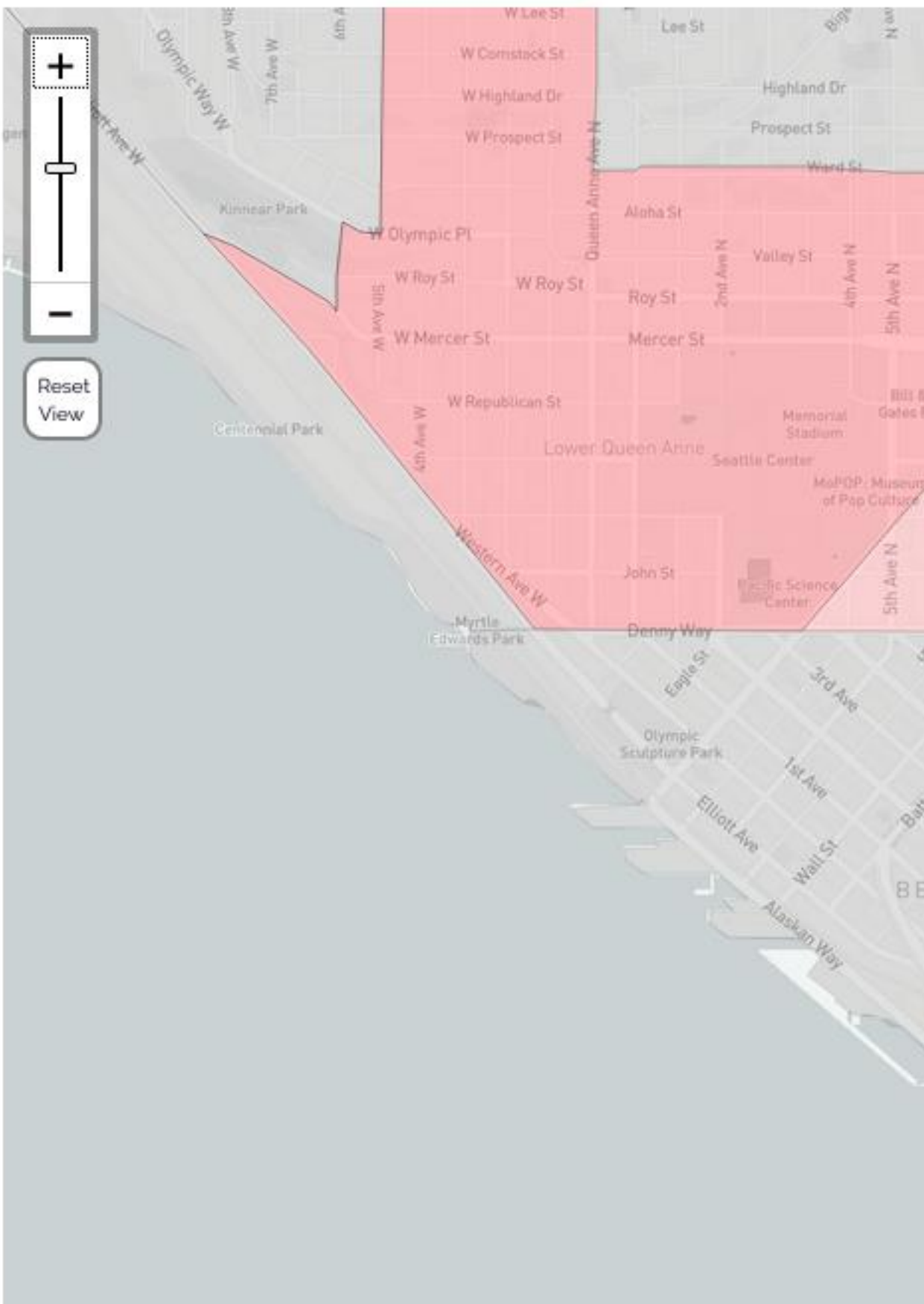
0571 629049 - 0571 686341

Testi a cura dell'Ufficio Relazioni con il Pubblico del Comune di Castelfiorentino
Raccolta, analisi e allestimento cartografico a cura di Geologyx - www.geologyx.it - info@geologyx.it



Open Data
Manchester









Sidewalk Problems per Mile

Low

High

Gray neighborhoods lack sufficient data to assess sidewalk problems. Click on any neighborhood to start contributing. Results are preliminary and represent volunteer contributions that have not yet been validated. We are working on it. Stay tuned!


SEATTLE
SIGN IN


Custom





Maximum uphill steepness: 8%

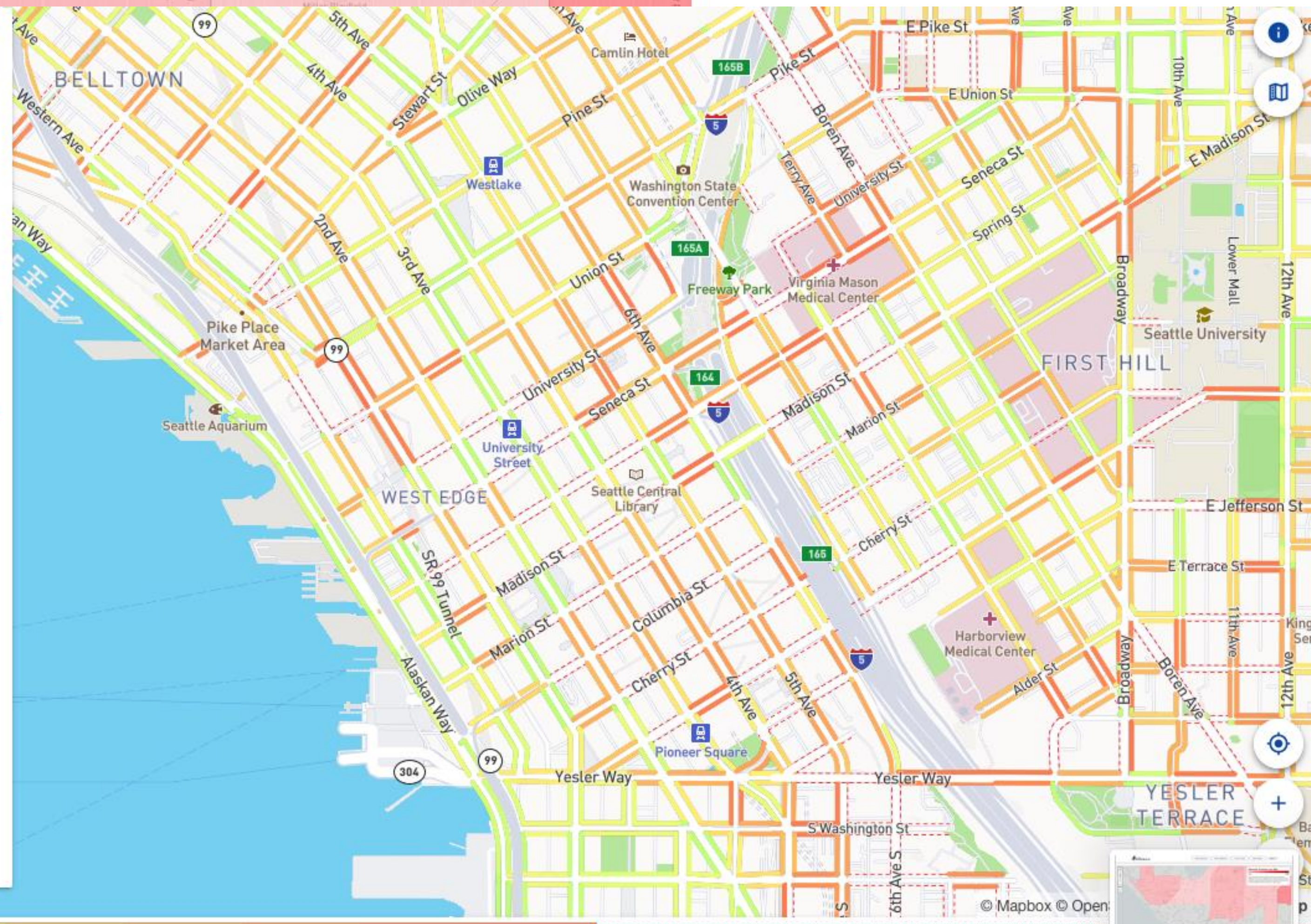
Maximum downhill steepness: 10%

Avoid barriers:

☒ Raised curbs

 SAVE





openroute
service

A

Start

B

End

Route preference

weight

Fastest

Avoid road types

Ferries

Steps

Wheelchair settings

Surface : All traversable surfaces

Incline : Flexible

Curb : Flexible

0.3.9

A detailed map of Heidelberg, Germany, and its surrounding areas. The map shows the Neckar river flowing through the city, with various districts and landmarks labeled. A route is highlighted in blue, starting from the left and following the river towards the right. The route passes through several districts, including Eppingen, Wieblingen, Neuenheimer Feld, and Heidelberg. Key landmarks such as the Heidelberg Castle (Heidelberger Schloss) and the Heidelberg University are visible. The map also shows the Neckar river and its tributaries, as well as the surrounding hills and forests. The map is overlaid with a grid of latitude and longitude lines. The map is titled "Heidelberg" and "Neckar". The map is created using OpenStreetMap data and is powered by MapSurfer.NET.

1 km
3000 ft

Leaflet | Map data © OpenStreetMap contributors, powered by MapSurfer.NET



< Edit feature ✓

☒ Yes

Add field: Covered, Description, Elevation...

▼ All tags (7)

| | | | |
|----------------|----------------|--|--|
| cycleway | lane | | |
| highway | trunk | | |
| lit | yes | | |
| maxspeed | 30 mph | | |
| name | Wilbraham Road | | |
| ref | A6010 | | |
| tactile_paving | | | |

+

yes

no

cobblestone

no

incorrect

guideway

contrasted

bad

limited

▼ All relations (2)

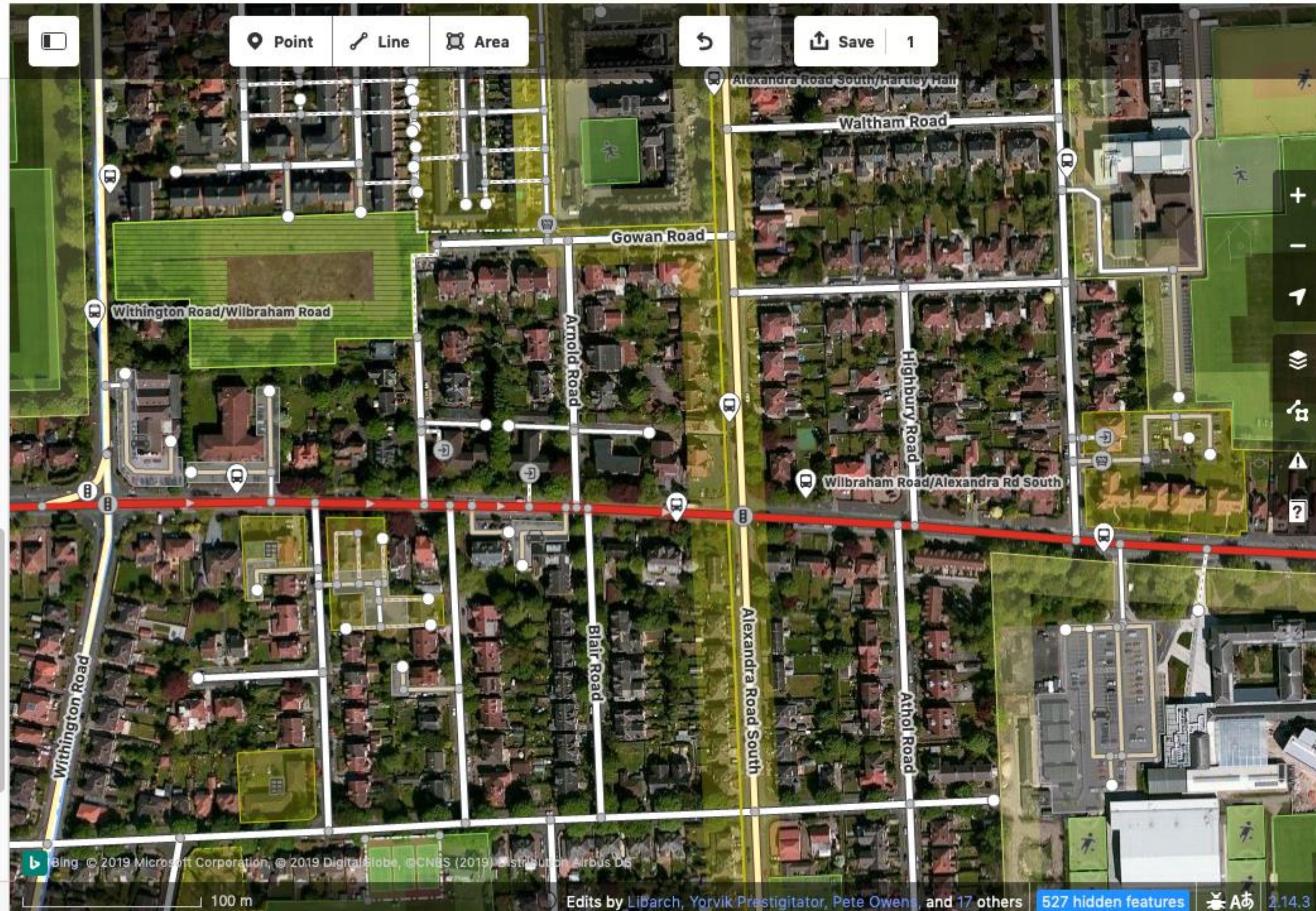
Bus Route Manchester

Role

Bus Route Manchester

Role

[View on openstreetmap.org](#)



NEXT STEPS...

NEXT STEPS...

- **We need to think carefully how these experiences are described**
- **But this needs to be led by the communities themselves.**
- **OSM training**
- **We want to talk to you!**

THANK YOU

opendatamanchester.org.uk

@opendatamcr | @milsomsam

<http://bit.ly/ODM-MMSGIT>